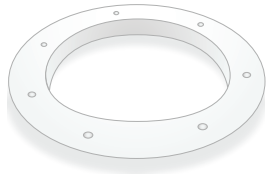
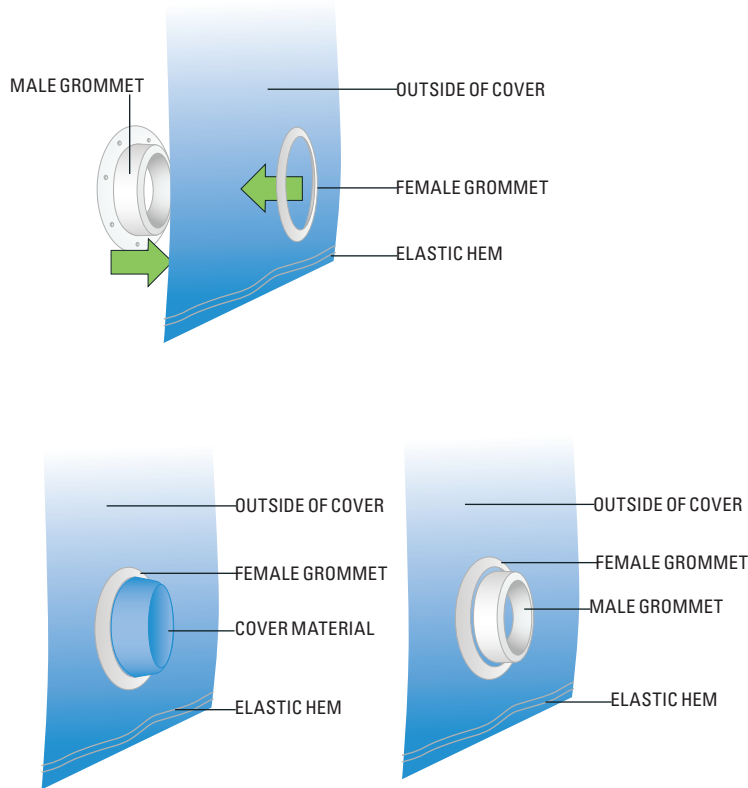
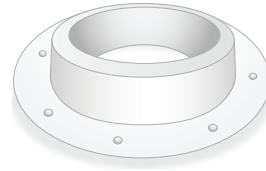




FEMALE GROMMET



MALE GROMMET



## GROMMET INSTALLATION INSTRUCTIONS

Your Grommets each come as two separate pieces that lock together. There is a male piece and a female piece as pictured here. You will snap the grommets together through the cover material, which requires some force. To accomplish this, you may need to use a pair of wrenches, although it is possible to do without.

1. Identify the male and female parts of your grommet.
2. Position the male grommet part on the inside of your cover, and the female part of your grommet on the outside of your cover as illustrated, leaving a small excess of cover material between the two.
3. Using a good amount of force, snap the two pieces together. You may need to use a pair of wrenches (one to stabilize, one to apply force) in order to accomplish this, although it is possible to snap them together without using any tools.
4. Once the grommet pieces have snapped securely together, puncture the cover material with scissors or a sharp edge, being sure to leave some of the cover material around the wall of the male part of the grommet.
5. Repeat as necessary with any additional grommets you wish to install. To use with a Cable Lock Kit, you will need to install grommets as PAIRS, and loop the Cable Lock through each grommet hole.